

Classical



WRR 101.1 fm

wrr101.com

Overture

Dallas / Fort Worth • wrr101.com

Broadcasting in all-digital



WRR CLASSICAL 101.1 FM ■ A MONTHLY PUBLICATION FOR FRIENDS OF WRR ■ SEPTEMBER 2007

Best bets for the new season

From *Art Matters* hosts Quin Mathews and Sharon Bengé

Each week on *Art Matters* we point out a few art events that might interest you. Here are some of our best bets for the upcoming arts season:



Beethoven Festival, Dallas Symphony Orchestra, Meyerson Symphony Center, Dallas, Oct. 18 – Nov. 11

Two of the concerts feature Music Director Designate Jaap Van Zweden (it's pronounced SWAY-den). Here's an opportunity to hear what he and the musicians do.

Declaring Space, Modern Art Museum of Fort Worth, Sept. 30 – Jan. 6

This exhibition focuses on four major post-war artists and how they used abstract space and color.

Chimneys and Towers: Charles Demuth's Late Paintings of Lancaster, Amon Carter Museum, Fort Worth, Aug. 18 – Oct. 14

After some minor but necessary repairs, the Carter has reopened with the mature work of this American precisionist. Demuth's renderings of industrial sites in and around Lancaster, Pennsylvania could have been done only by an American.

Lone Star Legacy: The Barrett Collection of Early Texas Art, Dallas Museum of Art, Through Nov. 11



View the European influence on early Texas painters from the collection of Dallas art lovers Richard and Nona Barrett.



Dracula, Texas Ballet Theater, Music Hall at Fair Park, Dallas, March 28 - 30
Bass Performance Hall, Fort Worth, April 18 - 20
Ben Stevenson's ballet, set to the music of Franz Liszt, promises to be something to die for!

Legend Awards: Roger Winter, Dallas Contemporary, Sept. 7 – Oct. 27

Each year the Contemporary honors a Texas artist. This year it's Roger Winter, not only a noted painter but teacher of well-known artists such as John Alexander and David Bates. This exhibition combines old work and new, as Winter continues to paint daily in New York.

continued on page 2

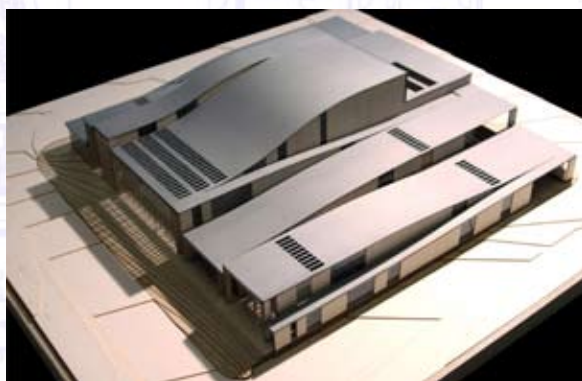
'Lyric and elegant' City Performance Hall plans unveiled

Linear pavilions capped by varying ribbon-like roof forms best describes the recently unveiled architectural plans for the City Performance Hall to be built in the Dallas Arts District at the corner of Ross and Routh streets.

Designed by Skidmore, Owings & Merrill, in association with Corgan Associates, Jaffee Holden acousticians, and SchulerShook theater consultants, the City Performance Hall will compliment other facilities in the downtown arts district, strengthen the urban character of downtown Dallas, provide a strong entry experience at Flora Street and offer efficient and economical space for users and visitors.

Currently five venues are under construction in the Dallas Arts District: the Winspear Opera House, Wylie Theatre, Annette Strauss Artists Square, Performance Park and the City Performance Hall.

The City Performance Hall will be built in two phases. Construction of Phase 1, slated to begin in late 2008, will include a 750-seat hall. Dallas taxpayer approved \$30.8 million in the 2006 Bond Program for design and construction of Phase 1. With completion of Phase 2, the facility will, in addition to the 750-seat multi-purpose hall, include two 200-seat flexible theaters, a café, book shop, art gallery, social hall, two classrooms and two rehearsal halls. Visit wrr101.com to hear an interview with Leigh Breslau, architect for the new City Performance Hall.



Coming Attractions: MET at the Movies

The Metropolitan Opera series of live, high-definition performance transmissions to movie theaters around the world is coming back! The series enjoyed box office success, reaching an estimated audience of more than 325,000 viewers. In 2007-08, the Met offers its second season of international HD transmissions—this time with eight broadcasts, up from last year's six. Don't miss the chance to enjoy thrilling, world-class opera at your neighborhood theater!



Roméo et Juliette – Gounod - Dec. 15
Hansel and Gretel (new production) – Humperdinck - Tuesday, Jan. 1, 2008
Macbeth (new production) – Verdi - Jan. 12, 2008

Manon Lescaut – Puccini - Feb. 16, 2008
Peter Grimes (new production) – Britten - March 15, 2008
Tristan und Isolde – Wagner - March 22, 2008
La Bohème – Puccini - April 5, 2008
La Fille du Régiment (new production) – Donizetti - April 26, 2008

Dallas Opera broadcasting 50th Anniversary season on WRR

Meet queens, priest, pagans and pretenders, noble knights and courageous slaves—and all in the comfort of your own home!

Thanks to a thrilling collaboration between The Dallas Opera and WRR Classical 101.1 FM, listeners throughout North Texas have an opportunity to hear every breathtaking moment of The Dallas Opera's 50th Anniversary Season, "A Season of Masters," originally presented between November, 2006 and March, 2007 by the Elsa von Seggern Foundation.

"As opera enthusiasts eagerly anticipate the upcoming season, they can quench their thirst for world-class opera by tuning in to WRR," Kurt Rongey, WRR Operations Manager said. "Kudos to The Dallas Opera for making its entire, awe-inspiring, 50th Anniversary Season accessible to everyone."



Friday, Aug. 31- *Nabucco*
Friday, Sept. 7- *The Barber of Seville*
Friday, Sept. 14- *Mary Queen of Scots*
Friday, Sept. 21- *Bluebeard's Castle*
Friday, Sept. 28- *La Rondine*
Friday, Oct. 5- *Lohengrin*

TEXAS WOMAN'S UNIVERSITY

DENTON ■ DALLAS ■ HOUSTON

**TWU faculty, students and alumni
are connecting excellence
to the real world every day**



Faculty

Dr. Ron French – One of only 15 Texas faculty named a 2007 Piper Professor for outstanding teaching



Students

Stephanie Ozuna – One of only 12 students statewide selected for the Moreno/Rangel Legislative Leadership Program in the Texas Legislature



Alumni

Dr. Melody Johnson – The first female superintendent of the Fort Worth Independent School District

www.twu.edu
940-898-2000

Connecting
Excellence  to the
Real World

Overture

AFI DALLAS joins WRR and DWS at Picnic in the Park Sept. 2

WRR's annual Picnic in the Park will be Sunday, Sept. 2 at the Dallas Arboretum. A new feature to this year's event is the addition of AFI DALLAS International Film Festival. AFI DALLAS will present of a family-friendly movie following the free Dallas Wind Symphony Concert.



The DWS concert begins at 7 p.m. and will include such classic patriotic pieces as *The Star Spangled Banner*, *Stars and Stripes Forever* and *Armed Forces Salute*. The wind symphony also will delight with some foot-stomping treats including tributes to Henry Mancini and the rock band Chicago as well as a salute to American jazz.

heartwarming film.

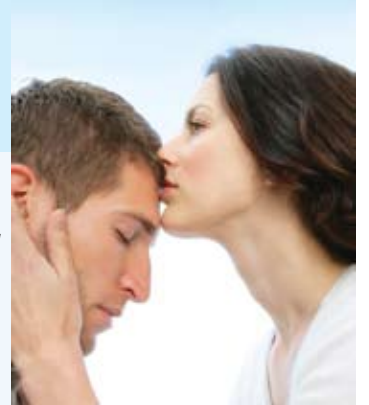
Following this invigorating concert, AFI DALLAS will present "BABE," a Golden Globe and Academy Award-winning 1995 Australian film based on Dick King-Smith's beloved children's novel. This delightful family movie tells the story of an intelligent swine whose sheep herding talents just might save him from the slaughterhouse. Featuring live-action comedy with state-of-the-art special effects and performances by animal actors, BABE is an inventive,

Make plans to join WRR, Sept. 2 at the Dallas Arboretum. Admission and parking is free beginning at 5:30 p.m. For more details, stay tuned to WRR or visit wrr101.com.

Pride & Prejudice at the Dallas Theater Center

Dallas Theater Center opens the 2007-08 season with Jane Austen's beloved romantic comedy *Pride and Prejudice*, adapted by Catherine Sheehy and directed by Stan Wojewodski, Jr., at the Kalita Humphreys Theater through September 23.

Sheehy, resident dramaturg of Yale Repertory Theater and chair of Dramaturgy and Dramatic Criticism for Yale School of Drama, has redefined this classic novel for the modern stage. Weaving the unexpected love story between the headstrong Elizabeth Bennet and the haughty Mr. Darcy with subtle social commentary on issues of class and reputation, *Pride and Prejudice* sparkles with remarkable wit and elegance, remaining relevant and timeless to audiences today.



All performances of *Pride and Prejudice* will be held at the Kalita Humphreys Theater, located at 3636 Turtle Creek Blvd. at Blackburn St. Opening night is Tuesday, Sept. 4 at 7:30 p.m. Performance times are Tuesday through Thursday evenings at 7:30 p.m.; Friday and Saturday evenings at 8 p.m.; Saturday and Sunday matinees at 2 p.m.; and select Sunday evenings at 7:30 p.m. Single ticket prices range from \$16 to \$60 and are available by calling the box office at 214-522-8499 or by visiting www.dal-lastheatercenter.org.

Best bets continued from page 1



The Sound of Music By Richard Rodgers and Oscar Hammerstein II, Dallas Theater Center, Nov. 2, 3, & 4

Richard Hamburger returns with a world premiere of the Salzburg Marionette's version of this Broadway and movie classic. You will have only

three days to see what the ever-inventive Richard has brought us!

Season's Greetings by Alan Ayckbourn, Stage West, Nov. 23 – Dec. 31

Stage West is opening a new season in an old home; the former warehouse on Fort Worth's near Southside. Jerry Russell has always had an affinity for Alan Ayckbourn and presents him well. *Season's Greetings* is the playwright at his best. This should make for a very merry Christmas.

Angels in America, Fort Worth Opera, May 16 – June 7

The Fort Worth Opera Festival enters its second year and introduces this rework-

ing of a modern theater classic in the intimate Scott Theater in the Fort Worth Cultural District.

DART Station Design and Art Program Anytime

You don't have to go indoors to see art. There's public art at each of DART's 38 train stations, and each one is different. Enjoy the ride!

Overture

General Manager: **Greg Davis**
Managing Editor: **Victoria Eiker**
Editor: **Paul Adams**

Overture is the official publication of WRR Classical 101.1 FM. Send Comments or story ideas to:

Editor: wrrmac@wrr101.com, or

Overture Editor - WRR FM
PO Box 159001
Dallas, TX 75315
214-670-8888



Business banking you can feel good about.

(Business bankers you'll want to hug.)

At Viewpoint Bank, we know finding the right business checking account is everything. That's why we'll help you find the one that's right for you. Maybe you'd like one with no monthly fees. Or maybe you'd like the chance to earn credit to offset your fees. We can do that. It's the way business banking should be. It's also the way it is with us. (Can't you feel the love?)



ViewPoint Bank
It's different here.

www.viewpointbank.com

Ready for an action plan? Call us at 972-801-5775.
Visit us at more than 30 metroplex locations and 85 ATMs.

MEMBER FDIC

We know business. *Your* business.

Van Cliburn Foundation's 07-08 Season



Joshua Bell

The Van Cliburn Foundation's 2007-08 season features 18 different concerts at four different venues.

The season features a dazzling array of performers including Joyce Yang, André Watts, Joshua Bell, Lang Lang and mezzo soprano Anne Sofie von Otter at some of the best venues in Fort Worth for live performances.

Hear Joshua Bell in the Bass Performance Hall, Mariusz Kwiecien's deep baritone voice reverberate off the concrete walls of the Kimbell or Richard Danielpour's work echoing through the Modern Art Museum of Fort Worth.

Tickets are still available to many performances but reserve your tickets now, as space is limited. See cliburn.org for more information.

Station Program Schedule

DAY PART	SUNDAY	MONDAY	TUESDAY	WEDNESDAY	THURSDAY	FRIDAY	SATURDAY	
5 AM	Music All Night with Peter Van de Graaff						Music All Night with Peter Van de Graaff	
6 AM								
7 AM								
8 AM	Morning Musicales						The Morning Show with Christopher Hackett	Morning Musicales with Karen Moyer
	Trinity United Methodist							
	Christian Science Sentinel							
9 AM	University Park Methodist						Midday Music with Adriana Bate	From the Top with Christopher O'Riley
	Lovers Lane United Methodist							
	Pastoral Reflections							
10 AM	St. Andrews Episcopal						Classic Cafe with Adriana Bate	Midday Music with Adriana Bate
11 AM	Preston Hollow Presbyterian							
NOON								
1 PM	Command Performance with Karen Moyer	The Going Home Show with Kurt Rongey	The Afternoon Concert with Amy Bishop					
2 PM								
3 PM								
4 PM	Art Matters	Exploring Music with Bill McGlaughlin	The Afternoon Concert with Amy Bishop					
5 PM	The Afternoon Concert with Amy Bishop							
6 PM								
7 PM			The Evening Concert with Kevin Sutton	A Night on the Town with George Harter				
8 PM	The San Francisco Symphony Orchestra	Chicago Symphony Orchestra			The Cliburn Winners	New York Philharmonic this Week	Cliburn Concerts/ The Evening Concert with Kevin Sutton	
9 PM					Theme and Variations with Kevin Sutton			
10 PM	Pipedreams with Michael Barone	The Evening Concert with Kevin Sutton	The Evening Concert with Kevin Sutton	Romantic Hours with Mona Golabek				
11 PM								
MIDNIGHT	Music All Night With Peter Van de Graaff							
1 AM								
2 AM								
3 AM								
4 AM								
DAY PART	SUNDAY	MONDAY	TUESDAY	WEDNESDAY	THURSDAY	FRIDAY	SATURDAY	

One of the most romantic stories ever told...

Jane Austen's

Pride and Prejudice

Directed by Stan Wojewodski, Jr.

August 29 - September 23



Executive Producing Partner **Michaels**



TICKETS NOW ON SALE!
214.522.8499
www.dallastheatercenter.org
GO AS A GROUP & SAVE.
CALL 214.521.2794

The Dallas Theater Center wishes to acknowledge the generous support of our season sponsors.



Join Friends of WRR today!

Why support the Friends? Music enriches all of our lives. We at the Friends of WRR are committed to providing programming that enhances classical music education and benefits the local community, its artists, and arts groups.

Support from individuals and organizations alike enables the Friends to continue responding to artistic needs within the community.

By giving to the Friends, you add your voice to our own and help promote classical music throughout the metroplex and beyond.

Members receive many benefits, including:

- The monthly WRR Overture
- Special discounts for merchandise and special events

Support the Friends of WRR today, and help to support the education, enjoyment and understanding of classical music in the WRR listening area.

Friends of WRR Membership Levels

(Please select one)

- Benefactor (\$1011) Patron (\$500)
 Classic Friend (\$101) Regular Member (\$50)

Full Name: _____

Billing Address: _____

City: _____

Zip: _____

Phone Number: _____

E-mail Address: _____

Select form of payment: Check Credit Card

Credit Card Number: _____

Expiration Date: _____

Signature: _____

Please mail this form and check to:

Friends of WRR
P.O. Box 570495
Dallas, TX 75357



Must Hear Radio: September Programming Highlights



By Kurt Rongey
Operations Manager

Kicking the month off with a musical big bang, the *WRR Top 40 Classical Countdown* will continue through Labor Day. The Grand Finale is from 8-10 p.m. Sept. 3.

Bill McLaughlin's *Exploring Music*, heard weeknights at 7 p.m. on WRR, will touch on a few interesting topics this month, including a composers' challenging task of writing a ninth symphony the week of Sept. 10. The week of Sept. 17, he'll explore Spain's music and culture.

Our Dallas Opera broadcast series continues Friday at 8 p.m. this month. Adriana Bate will be your host for these presentations of the uncut operas as heard in the Music Hall and, in one case, the Meyerson. Sept. 7 – *The Barber of Seville*. Sept. 14 – *Mary Queen of Scots*. Sept. 21 – *Bluebeard's Castle*. Sept. 28 – *La Rondine*.

Another WRR exclusive, *Summer Evenings with the Dallas Wind Symphony* wraps up on Sept. 19. Dr. Carol Reynolds and Jerry Junkin co-host this survey of great performances from America's Premiere Wind Band.

Upcoming Station Events

Sept. 2	WRR Picnic in the Park Dallas Arboretum 7 p.m.
Sept. 8	Fort Worth Symphony Orchestra at Southlake Barnes & Noble from noon-2 p.m.
Sept. 15	Meet and Greet at Bachendorf's for Dallas Bach Society 1-3 p.m.
Sept. 29	Meet and Greet at Bachendorf's with the Dallas Wind Symphony 1-3 p.m.
Oct. 6	Meet and Greet at Bachendorf's with the Dallas Opera 1-3 p.m.

ROLEX

OYSTER PERPETUAL
36MM DATEJUST

BACHENDORF'S
PLAZA AT PRESTON CENTER 214/692-8400
GALLERIA LEVEL 1 972/392-9900
PRESTON PARK VILLAGE, PLANO 972/596-2090

OFFICIAL ROLEX JEWELER
ROLEX OYSTER PERPETUAL AND DATEJUST ARE TRADEMARKS.

McKinney Performing Arts Center Summons

Court summons have been issued, and your notice-to-appear is scheduled for this fall at the McKinney Performing Arts Center at the Historic Collin County Courthouse. MPAC, a historic courthouse remodeled as a performing arts center, is proud to announce its first MPAC Presents Fall 2007 season with five dynamic events for the entire family.

- *The Intergalactic Nemesis*, Sept. 14, A Live Radio Sci-Fi Adventure
- *Rockapella*, Sept. 27, The Undisputed

Kings of A Cappella

• *Nipples to the Wind*, Oct. 12-14, New Comedy Celebrating the Spirit of Woman and Their Ability to Keep Going

• *The Killdares*, Oct. 28, Cutting Edge Celtic Music

• *Festival of Trees and A Christmas Carol*, Nov. 20-25, McKinney's Own Winter Wonderland with Dickens' Classic

For tickets and information, please call 214-544-4630 or visit www.mckinneyperformingartscenter.org

Classical



WRR 101.1 fm
wrr101.com

Overture

Dallas / Fort Worth • wrr101.com Broadcasting in all-digital

WRR CLASSICAL 101.1 FM ■ A MONTHLY PUBLICATION FOR FRIENDS OF WRR ■ SEPTEMBER 2007

FRIENDS



OF WRR

P.O. Box 570495
Dallas, TX 75357
(214) 421-8500

PRSRFT FIRST-CLASS MAIL
U.S. POSTAGE
PAID
DALLAS, TX
PERMIT NO. 13