



# Overture

Dallas / Fort Worth • wrr101.com

Broadcasting in all-digital



WRR CLASSICAL 101.1 FM ■

THE OFFICIAL PUBLICATION OF WRR

■ DEC. 2007/JAN. 2008



## Caroling at the Adolphus

WRR's most popular holiday tradition, *Caroling at the Adolphus*, will be Dec. 3-7 from noon to 1 p.m. in the magnificent lobby of the historic Adolphus Hotel at 1321 Commerce Street. This year, the Dallas Symphony Orchestra joins WRR in presenting this holiday favorite. Other sponsors include Bibbentuckers, Aneita Fern, Gavrel Furs, Sewell Automotive, Frisco Strings and Cork Fine Wines.

*Caroling* is a live radio program of seasonal choral music. All performances are one hour (noon-1 p.m.), free of charge, and include complimentary coffee, hot cider and cookies. Seating is limited for these presentations, and is on a first-come, first-served basis. If you can't make it to The Adolphus be sure to tune in to WRR Classical 101.1 FM or stream the broadcast for these very special presentations.

"This is WRR's 23<sup>rd</sup> year to partner with The Adolphus to present this special holiday gift to North Texas," General Manager Greg Davis said. "Each performance is spectacular."

Joining the lineup of favorites this year, such as the Turtle Creek Chorale and the Texas Boys Choir, will be the Singing Girls of Texas, an exciting ensemble of girls from grades 9 through 12 at the Fort Worth Academy of Fine Arts, and Evening Song, a Dallas-based vocal ensemble of 40 voices with a broad-based repertoire of inspirational and secular music.

### This year's schedule:

- Monday, Dec. 3— Turtle Creek Chorale
- Tuesday, Dec. 4— Texas Boys Choir and Singing Girls of Texas
- Wednesday, Dec. 5— Evening Song
- Thursday, Dec. 6— Women's Chorus of Dallas
- Friday, Dec. 7— Dallas Symphony Chorus

## WRR wins four MarCom Creative Awards

WRR Classical 101.1 FM is the recipient of four 2007 MarCom Creative Awards from the Association of Marketing & Communication Professionals. The MarCom Creative Awards is an international competition that recognizes outstanding achievements by marketing and communication professionals.

This year's competition included more than 5,000 entries from corporate marketing and communications departments, advertising agencies, public relations firms, design shops, production companies and free-lancers. Winners range from individual communicators to media conglomerates and Fortune 500 companies.

WRR received a prestigious Platinum Award in the Web Site Home Page category. (WRR's web address is wrr101.com.) Platinum winners are recognized for excellence in terms of quality, creativity and resourcefulness.

The station also received a Platinum Award in the External Newsletter/Government category for its publication, *Overture*. Judges recognized the September 2007 issue of the monthly newsletter, which included an Arts Season Overview and articles about Met Opera at the Movies, the new Performing Arts Center, and the Dallas Opera.

"WRR is in the business of broadcasting classical music, but our entire staff consists of a team of enthusiastic, dedicated and creative individuals," WRR General Manager Greg Davis said. "That we are recognized by an international awards committee for our creative endeavors is a testament to the caliber of individuals at WRR."



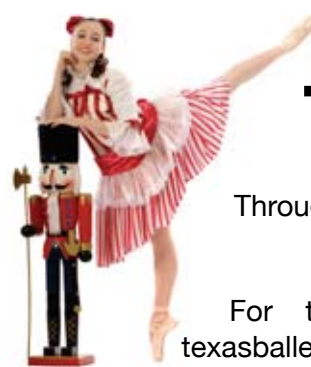
## The Dallas Symphony Orchestra presents

Northpark Center and The Dallas Symphony Orchestra present *JOY! A Christmas Celebration* From Dec. 13-23 at The Meyerson Symphony Center. WRR Classical will be sending



listeners to *JOY!* all season long through ticket giveaways on-air and at WRR101.com! Ring in the holiday season in this year's annual Christmas extravaganza featuring a full production of holiday favorites performed by the orchestra, chorus, children's choir, Dickens carolers and even a visit from Santa! Make your list and check it twice because WRR is going to send some lucky listeners this holiday season to *JOY!* at the Dallas Symphony Orchestra!

## Texas Ballet Theater The Nutcracker



Through Dec. 16, Bass Performance Hall in Fort Worth  
Dec. 20-23, Music Hall at Fair Park in Dallas

For tickets, call 877-212-4280 or visit [www.texasballettheater.org](http://www.texasballettheater.org)

It inspires memories that last a lifetime. A Texas Ballet Theater favorite since the late 1960s, *The Nutcracker* is a holiday tradition performed at Bass Performance Hall and the Music Hall at Fair Park. Artistic Director Ben Stevenson brings a sense of play and joy to his staging of the holiday story of Clara, whose Nutcracker Prince takes her to the Land of Snow and the Kingdom of Sweets for a feast and dancing by mirlitons, Madame Bonbonaire and her children, the waltzing flowers and the Sugar Plum Fairy.

## TEXAS WOMAN'S UNIVERSITY

DENTON ■ DALLAS ■ HOUSTON

TWU faculty, students and alumni  
are connecting excellence  
to the real world every day



### Faculty

Dr. Ron French – One of only 15  
Texas faculty named a 2007 Piper  
Professor for outstanding teaching



### Students

Stephanie Ozuna – One of only  
12 students statewide selected  
for the Moreno/Rangel Legislative  
Leadership Program in the Texas  
Legislature



### Alumni

Dr. Melody Johnson – The first  
female superintendent of the  
Fort Worth Independent  
School District

www.twu.edu  
940-898-2000

Connecting  
Excellence  to the  
Real World

# Overture



## Tuzer Ballet

### 23rd Annual Nutcracker

Dec. 22 at 2 p.m. and 8 p.m., Dec. 23 at 2 p.m., Eisemann  
Center

Tuzer Ballet, under the artistic direction of Tanju and Patricia Tuzer, presents their 23rd annual beloved holiday masterpiece “The Nutcracker” on Saturday, Dec. 22 at 2 p.m. and 8 p.m. and Sunday, Dec. 23 at 2 p.m., at Charles W. Eisemann Center for Performing Arts, 2351 Performance Drive in Richardson. Tickets are \$10 to \$50 and are available online at [www.eisemanncenter.com](http://www.eisemanncenter.com). Tuzer Ballet’s Nutcracker is the longest running Nutcracker in the Dallas metroplex and has received praise for its purity and spirit.

## Home for the Holidays

Dec. 8 at 8 p.m. at Irving Arts Center

Join Maestro Hector Guzman and the Irving Symphony Dec. 8 for *Home for the Holidays*. Guest Baritone Donnie Ray Albert and Julliard graduate soprano soloist Jeanine Thames join the symphony at Irving Arts Center’s Carpenter Hall.

This family friendly concert will feature a variety of seasonal favorites including Winter Wonderland, Ave Maria, White Christmas and many more. Shh... there should be some very special holiday guests. Learn more at [www.irvingsymphony.com](http://www.irvingsymphony.com)



## Classical CD Reviews:

by Kevin Sutton



### Symphonic Poems by Svendsen and Selmer

Oslo Philharmonic Orchestra  
Michail Jurowski  
Recorded 25-29 August

2003 in Oslo Konserthaus.  
SIMAX PSC 1233 [76:33]

Johan Severin Svendsen was born into a musical family. His father was a military musician who insisted that his son master several instruments. When he became old enough, the young Johan also entered military service, later going to Leipzig to study and later to Bayreuth, where he met Wagner. He would later work with Grieg as conductor of the Music Society Orchestra in Kristiania. His final position would be as Kappellmeister at the Royal Danish Theatre in Copenhagen, a job that would so tax his time that his career as a composer was effectively ended.

Sigurd Slembe was inspired by both a drama by Bjørnstjerne Bjørnson and a painting by Ole Peter Hansen. The work is inspired by two episodes in the hero’s life: his love for a beautiful Lappish girl, and his death in battle. Svendsen’s score is colorful, at times deeply passionate, at others achingly tender. Although its harmonic language is purely romantic, the work is devoid of German molasses, and possesses a more open and airy orchestration than do the works of Brahms, Bruckner or Wagner, giving it a vibrant sound that is so refreshing in music from Northern Europe.

Based on Washington Irving’s translation of *The Legend of the Rose of Alhambra*, Svendsen’s *Zorahayda*, which he subtitled “legend for orchestra” was

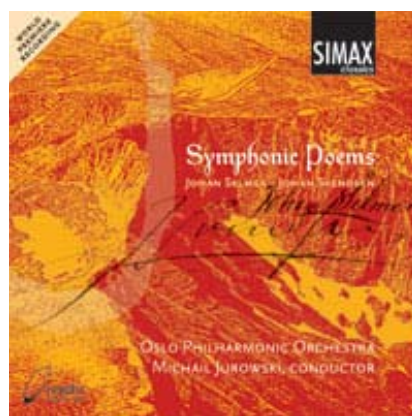
heavily influenced by Richard Wagner. The Svendsens were in Bayreuth when it was composed and Wagner was busy working on Parsifal at the time. Wagner was obsessed with the rite of Holy Communion during his work on Parsifal. That the central theme of *Zorahayda* is the sacrament of Holy Baptism is clear evidence of Wagner’s influence on the younger composer at the time. Highly programmatic, Svendsen divides the music into six episodes that correspond with events in the story. The music that he created is stunning, with ravishingly beautiful textures and harmonies, and an adept hand at orchestration that could rival Berlioz or Rimsky-Korsakov.

Johan Peter Selmer’s career was in many ways, similar to Svendsen’s in that they both studied abroad, both were greatly influenced by contemporary giants of music (in Selmer’s case it was Berlioz) and they both returned home later in life to reasonable success.

Their differences lie in their music. Whereas Svendsen is possessed of a certain profundity and grace, Selmer is more light hearted

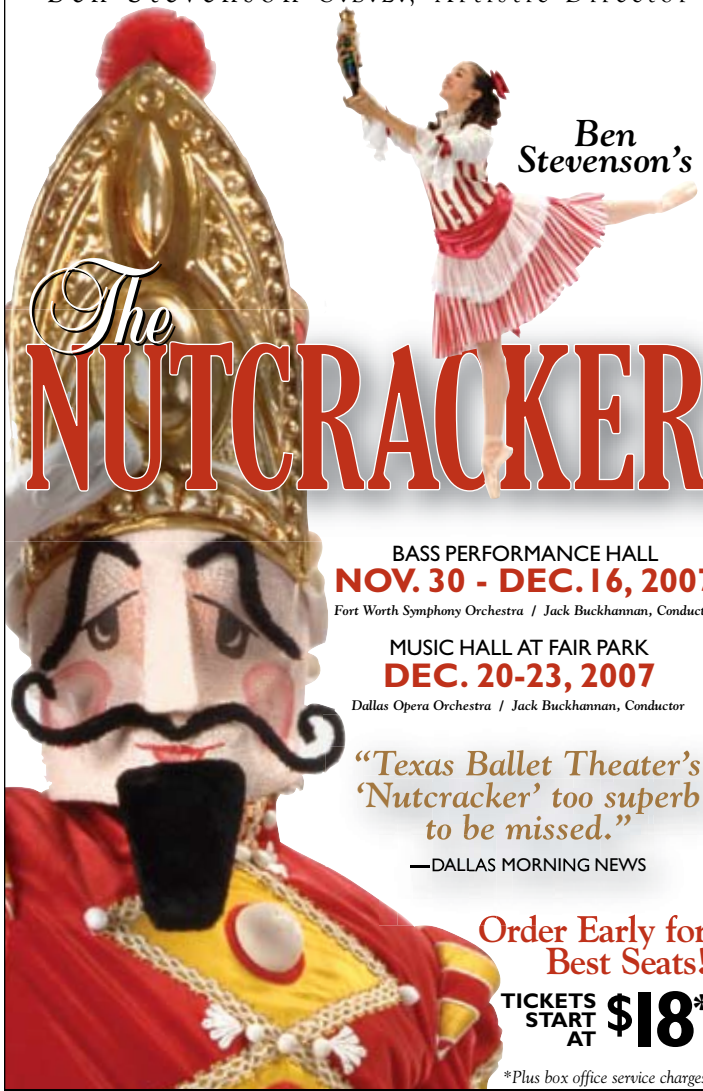
in his approach, and as such the music, while well constructed, does not make either an immediate or lasting impression. The two works presented here could almost be considered in the “light music” genre, with their airy little tunes and rhythmic gestures that are more akin to music for wind band than orchestra.

Michail Jurowski leads fine, taut performances of all of this music. The standout performance here is *Zorahayda* which Jurowski treats with great tenderness and depth of emotion. The Oslo orchestra’s reputation has been long established, and they do not fail to live up to their high standards here. Warm strings, clean winds and pungent brasses all get their moments in the sun.



## Texas Ballet Theater

Ben Stevenson O.B.E., Artistic Director



Ben  
Stevenson’s

# The NUTCRACKER

BASS PERFORMANCE HALL  
NOV. 30 - DEC. 16, 2007

Fort Worth Symphony Orchestra / Jack Buckhaman, Conductor

MUSIC HALL AT FAIR PARK  
DEC. 20-23, 2007

Dallas Opera Orchestra / Jack Buckhaman, Conductor

“Texas Ballet Theater’s  
‘Nutcracker’ too superb  
to be missed.”

—DALLAS MORNING NEWS

Order Early for  
Best Seats!

TICKETS  
START  
AT \$18\*

\*Plus box office service charges

texasballettheater.org

877-828-9200

Artists: Lonnie Weeks, Betsy McBride. Photos: Ellen Appel.

## Fair Park KwanzaaFest

Dec. 8-9, 10-7 p.m.  
Sat. & 11-6 p.m. Sun.-  
Free Community Event,  
Fair Park's Automobile  
Building



*KwanzaaFest* is the largest, free community event in the state enhancing emancipation, education and enterprise of African American people. This free family event includes live entertainment by local talent and national recording artists as well as holiday shopping and free health screenings. WRR is a media sponsor of this event.

## Heritage Village's Candlelight

Dec. 8-9 from 3-9 p.m. –  
Admission at the gate: \$10 adults,  
\$8 seniors, \$6 children (4-12 years),  
Dallas Heritage Village, 1515 South  
Harwood at Gano St.

Enjoy the glow of hundreds  
of candles as they light the way  
around the 13-acre historic Village.

Visit the residents of the 1861  
Farmstead and Blum  
Home and see how  
the holidays were  
celebrated around  
the time of the  
Civil War and post-  
railroad Dallas. St.  
Nicholas and a craft  
area are available for  
children. Enjoy the  
sounds of Texas' rich  
musical heritage with  
seasoned performers.



## The Meadows presents Coming of Age

Join WRR Jan. 13 from 2-4 p.m.  
for a special live broadcast from the  
Meadows Museum featuring the new  
exhibit *Coming of Age*.

Free parking, entry  
and refreshments will  
be available during the  
broadcast and door  
prizes are available for  
the first 30 guests to  
the exhibit.

Experience the  
most comprehensive  
American art collection  
to come to Dallas in  
the past decade. The  
Meadows Museum at  
SMU presents *Coming  
of Age: American Art,  
1850s to 1950s*. The exhibition is direct  
from the Addison Gallery of American Art  
in Andover, Massachusetts. Organized  
with the American Federation of Arts,  
the exhibit will feature 71 paintings and  
sculptures showing the country's best-  
known artists.



Winslow Homer; *Eight Bells*, 1886  
Oil on canvas; 25 3/16 x 30 3/16 in.  
Addison Gallery of American  
Art, Phillips Academy, Andover,  
Massachusetts; gift of anonymous  
donor (1930.379) All rights  
reserved.

Over the course of the one  
hundred years from the 1850s to  
the 1950s, American art and culture  
came of age, *Coming of Age* explores  
the complex and extended process of  
maturation that took place  
throughout this formative  
century of American art.

The exhibition  
features works by Homer,  
Remington, Sargent,  
Whistler, Prendergast,  
Henri, Sloan, O'Keeffe,  
Hofmann, Franz Kline, and  
Pollock among others.

Feel the winds, see the  
landscapes and watch the  
haunting realism from the  
Civil War era to the robust,  
Abstract Impressionist  
work from the first half

of the 20th century. "Coming of Age:  
American Art, 1850s to 1950s" opens  
on Nov. 30 and runs through Feb. 24  
at the Meadows Museum at SMU,  
near Central and Mockingbird. Free  
covered parking is available. For more  
information call 214-768-2516 or visit  
meadowsmuseumdallas.org

## Must Hear Radio:

### Dec./Jan. Programming Highlights



By Kurt Rongey  
Operations Manager

Happy Holidays  
from Classical 101.1. In  
addition to a lively mix of  
holiday music throughout  
our broadcast day, the  
following is a small sampling of the many  
WRR programs that are sure to elevate  
the good mood of the season.

The Metropolitan Opera's broadcast  
season begins Saturday, Dec. 8 at noon  
and WRR will be on hand to bring you  
every exciting minute. December's lineup  
begins with Gluck's *Iphigenie en Tauride*  
starring Placido Domingo and Susan  
Graham. December 15, enjoy Gounod's  
*Romeo and Juliet*, followed by Prokofiev's  
*War and Peace* and the holiday favorite  
*Hansel and Gretel*. You won't want to

miss a single broadcast, live from the Met  
in New York.

Dec. 8 – 6:30 p.m. – A Hanukkah  
Celebration with host Karen Moyer.

Dec. 14 – 17 & 21 – 10 p.m., If you're  
wondering about the best new holiday  
music CD's, you can hear them on the  
*Main Event Friday* nights at 10 p.m.

Dec. 15 – 4:30 p.m. – The complete  
score of Tchaikovsky's *Nutcracker*.

Dec. 16 & 23 – 10 p.m. *Pipedreams*  
presents three holiday specials featuring  
the King of Instruments – Advent  
Anticipation, Christmas International, and  
An American Organist's Christmas.

Dec. 21 – 8 p.m. – The Preston Hollow  
Presbyterian Church Christmas Concert.

Dec. 23 – 7 p.m. – Handel's *Messiah*,  
performed in authentic fashion by the  
Dallas Bach Society.

Dec. 24 – 8 p.m. – The Dallas  
Symphony Orchestra presents Christmas  
Celebration Concert.

## Join Friends of WRR today!

Why support the Friends? Music enriches all of our lives. We at the Friends of WRR are committed to providing programming that enhances classical music education and benefits the local community, its artists, and arts groups.

Support from individuals and organizations alike enables the Friends to continue responding to artistic needs within the community.

By giving to the Friends, you add your voice to our own and help promote classical music throughout the metroplex and beyond.

Members receive many benefits, including:

- The monthly WRR Overture
- Special discounts for merchandise and special events

Support the Friends of WRR today, and help to support the education, enjoyment and understanding of classical music in the WRR listening area.

### Friends of WRR Membership Levels (Please select one)

- Benefactor (\$1011)     Patron (\$500)  
 Classic Friend (\$101)     Regular Member (\$50)

Full Name: \_\_\_\_\_

Billing Address: \_\_\_\_\_

City: \_\_\_\_\_

Zip: \_\_\_\_\_

Phone Number: \_\_\_\_\_

E-mail Address: \_\_\_\_\_

Select form of payment:     Check     Credit Card

Credit Card Number: \_\_\_\_\_

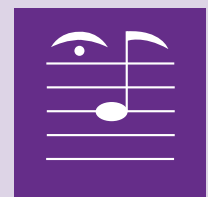
Expiration Date: \_\_\_\_\_

Signature: \_\_\_\_\_

Please mail this form  
and check to:

**Friends of WRR**  
P.O. Box 570495  
Dallas, TX 75357

FRIENDS



# SKAI Floral

extraordinary design

Order your holiday  
arrangements today.

The Stonebriar Commons  
1279 Legacy Drive, #115  
Frisco, TX 75034

214.618.0250  
www.skaifloral.com



## Overture

General Manager: Greg Davis  
Managing Editor: Victoria Eiker  
Editor: Paul Adams

Overture is the official publication of WRR Classical  
101.1 FM. Send Comments or story ideas to:

Editor: wrrmac@wrr101.com, or

Overture Editor - WRR FM  
PO Box 159001  
Dallas, TX 75315  
214-670-8888

# 101 Classical Candids

Photos from recent WRR Classical 101.1 FM events

WRR 101.1 fm  
www.wrr101.com



WRR at Bachendorf's for a live remote.



WRR gave these lucky Dougherty's shoppers tickets to the DSO's Beethoven Festival!



The Dallas Museum of Art announcing the Tutenkhamen exhibit will return in 2008!



The Dallas Bach Society brought along their harpsichord for one of Bachendorf's live broadcasts.



Some of WRR's staff having fun for Halloween.



Pierre Matisse, grandson of Henri, met with WRR's general manager Greg Davis and announcer Karen Moyer at the Texas Discovery Garden.



The Dallas Wind Symphony provided entertainment for our Bachendorf's meet & greet.



Kim Campbell, executive director of the Dallas Wind Symphony, talks with Christopher Hackett at one of WRR's remote broadcasts.



WRR's Christopher Hackett talks with Suzanne Calvin of the Dallas Opera and a Herend artist at Bachendorf's.



Members of the Richardson Symphony came out to the Beaujolais Bash for food, music and wine.



John Mackey, guest composer for the Dallas Wind Symphony, stops by the WRR offices.



WRR enjoyed the day at the grand opening of the new Dallas Animal Shelter.

## Met Opera at the Movies

clip & save broadcast schedule



### Saturday Matinee Broadcasts

Sponsored by **Toll Brothers**  
America's Luxury Home Builder

The Met continues its experiment of merging film with live opera as it begins its second season of live, high-definition performance transmissions to movie theaters around the world beginning Dec. 15. In 2007-08, the Met offers eight broadcasts, up from last year's six. Don't miss the chance to enjoy thrilling, world-class opera at your neighborhood theater! Following is the season schedule and a list of area theater's participating in this year's *Met at the Movies*.

Tickets are available online via FathomEvents.com, at the participating theater box office, or by calling the Met at 1-800-Met-Opera (1-800-638-6737). Prices are \$22 for adults, \$20 for seniors and \$15 for children.

### 2007-08 Met at the Movies Season-At-A-Glance

- **Roméo et Juliette – Gounod**  
Noon, Saturday, Dec. 15
- **Hansel and Gretel – Humperdinck**  
Noon, Tuesday, Jan. 1
- **Macbeth (new production) – Verdi**  
12:30 p.m., Saturday, Jan. 12
- **Manon Lescaut – Puccini**  
Noon, Saturday, Feb. 16
- **Peter Grimes (new production) – Britten**  
12:30 p.m., Saturday, March 15
- **Tristan und Isolde – Wagner**  
11:30 a.m., Saturday, March 22
- **La Bohème – Puccini**  
12:30 p.m., Saturday, April 5
- **La Fille du Régiment – Donizetti**  
12:30 p.m., Saturday, April 2

### North Texas Theater Locations

- **Arlington:** Parks at Arlington 18, 3811 S. Cooper St.
- **Dallas:** North Park Center 15, 8687 N. Central Expressway & Webb Chapel  
Cinemark, 11819 Webb Chapel
- **Grapevine:** Tinseltown Movie 17, 911 State Hwy 114 West
- **Lewisville:** Vista Ridge Mall, 2401 S. Stemmons Fwy.
- **Mansfield:** Cinemark 12 Town Center, 2041 N. Hwy 287
- **Plano:** Plano Legacy, 7201 Central Expressway & Tinseltown USA, 3800 Dallas Parkway
- **Rockwall:** Rockwall Cinemark, 2125 Summer Lee

# Station Program Schedule

DAY PART	SUNDAY	MONDAY	TUESDAY	WEDNESDAY	THURSDAY	FRIDAY	SATURDAY					
5 AM	Music All Night with Peter Van de Graaff	The Morning Show with Christopher Hackett					Music All Night with Peter Van de Graaff					
6 AM												
7 AM												
	Trinity United Methodist											
8 AM	Christian Science Sentinel						Morning Musicale with Karen Moyer					
	Wilshire Baptist Church											
9 AM	University Park Methodist											
	Lovers Lane United Methodist						From the Top with Christopher O'Riley					
10 AM	Pastoral Reflections						Midday Music with Adriana Bate					Morning Musicale with Karen Moyer
	St. Andrews Episcopal											
11 AM	Preston Hollow Presbyterian											
NOON	Command Performance with Karen Moyer	Classic Cafe with Adriana Bate					Metropolitan Opera (times vary)					
1 PM												
2 PM		Midday Music with Adriana Bate										
3 PM												
4 PM		Art Matters	The Going Home Show with Kurt Rongey					The Afternoon Concert				
5 PM	The Afternoon Concert											
6 PM												
7 PM		Exploring Music with Bill McGlaughlin					Art Matters					
8 PM	The Evening Concert	Dallas Symphony Orchestra/ Evening Concert	Chicago Symphony Orchestra	The Evening Concert	New York Philharmonic this Week	Fort Worth Symphony/ Evening Concert with Kevin Sutton	The Evening Concert					
9 PM				Theme and Variations with Kevin Sutton								
10 PM	Pipedreams with Michael Barone	The Evening Concert with Kevin Sutton		The Evening Concert with Kevin Sutton	Main Event with Kevin Sutton	A Night on the Town						
11 PM							Romantic Hours					
MIDNIGHT	Music All Night With Peter Van de Graaff											
1 AM												
2 AM												
3 AM												
4 AM												
DAY PART	SUNDAY	MONDAY	TUESDAY	WEDNESDAY	THURSDAY	FRIDAY	SATURDAY					

## WRR Notable Programs

**Arts Update:** 6:52 a.m. weekdays - Christopher Hackett is your host for this brief arts event listing covering the evening's events as well as those a couple days ahead.

**Road Rage Remedy:** 7:20 a.m. and 5:20 p.m. weekdays - WRR will calm your rush hour commute with music to soothe the nerves. Relax and enjoy the ride!

**March of the Day:** 7:35 a.m. weekdays - Having trouble getting around in the morning? WRR will get you in step with some of the world's most upbeat music -- Marches!

**The Wine Experience:** 6:20 p.m. weekdays - Presents topics relating to choosing and enjoying wine such as matching wine with different foods, virtual walks through vineyards and shopping tips.

**Dallas Symphony Orchestra:** 8 p.m., some Mondays. Complete concert performances of the Dallas Symphony Orchestra from the Meyerson Symphony Center.

**Theme and Variations:** 9 p.m. Wednesdays - Whether host Kevin Sutton focuses on a holiday, a composer or a performer, you'll enjoy WRR's new show of classical themes.

**Arts Calendar:** 5:30 p.m. Thursdays - An extended arts event listing covering the upcoming week, presented by Kurt Rongey.

**New York Philharmonic this Week:** 8 p.m. Thursdays - From Avery Fisher Hall, complete concert broadcasts in America's cultural capital.

**Fort Worth Symphony Orchestra:** 8 p.m. some Fridays - Miguel Harth-Bedoya and the orchestra recorded live in the Bass Performance Hall.

**From the Top:** 9 a.m. Saturdays - Some of the nation's most gifted young musicians take the stage for this inspiring and funny program.

**Inside the Dallas Opera:** Noon Saturdays, once a month - A behind the scenes look at the Dallas Opera including past performances, interviews with staff and artists plus upcoming engagements.

**The Main Event:** 8 p.m. Saturdays - Two hours of new classical CD releases. Hear it here first! Every Main Event show you have a chance to win one of the CD's we play.

**A Night on the Town:** 10 p.m. Saturdays - From Richard Rodgers to Andrew Lloyd Webber, George Harter brings you the best of the American musical stage.

**The Romantic Hours:** 11 p.m. Saturdays - Mona Golabek's popular, unique and yes, romantic mix of music and literature.

**Religious programming:** 7:30 a.m. until 12:30 p.m. Sundays - WRR airs religious services by churches of many denominations and faiths Sunday mornings. See Sunday listings for details.

**Art Matters:** 4 p.m. Sundays and 6:30 p.m. Thursdays - Quin Mathews and Sharon Bengé co-host this in-depth look at the arts in North Texas. This is the place to hear insightful interviews with some of the area's arts luminaries as well as distinguished visitors.

**Music of the Metroplex:** 7 p.m. 2nd Sunday of every month - Kevin Sutton interviews and surveys the work of eminent North Texas musicians and organizations.

**Pipedreams:** 10 p.m. Sundays - The king of instruments, the pipe organ, is the focus of this 90-minute program that spans the globe in its search for great music.

## Bachendorf's: a family tradition for over 100 years!



Long-time WRR advertiser and patron of the arts, Bachendorf's Jewelers has been a family tradition in Dallas for 60 years. Abraham Bock, Bachendorf's founder, began custom designing and manufacturing jewelry as a Master Jeweler in St. Petersburg, Russia. He and his son, Harry, moved to Dallas in 1947 and re-established his diamond importing and manufacturing company. The first Bachendorf's store opened in 1977 featuring the fine quality handmade custom jewelry and extensive collection of watches. Today Harry and his sons, the 4<sup>th</sup> generation, continue the family tradition.

When it comes to advising their long-time clientele, Bachendorf's takes pride in offering a broad selection of heirloom-quality jewelry and diamonds hand-picked by the family for exquisite cuts--every piece chosen with the utmost care to provide both beauty and value for generations to come.

Bachendorf's carries world famous jewelry designers such as David Yurman, Mikimoto, Roberto Coin, Gregg Ruth, John Hardy and a new line from Hearts on Fire offering "the world's most perfectly cut Diamond," as well as distinctive timepieces from Rolex, Cartier, Breitling, and Omega, and a stunning selection of gifts and accent pieces from Baccarat, Lalique, Lladro, Herend, Waterford, Swarovski, and Limoges.

Bachendorf's Jewelers has three locations: Plaza at Preston Center, Galleria Level 1, and Preston Park Village in Plano. Visit [www.bachendorfs.com](http://www.bachendorfs.com)

**ROLEX**

OYSTER PERPETUAL  
GMT-MASTER II

**BACHENDORF'S**  
PLAZA AT PRESTON CENTER 214/692-8400  
GALLERIA LEVEL 1 972/392-9900  
PRESTON PARK VILLAGE, PLANO 972/596-2090

OFFICIAL ROLEX JEWELER  
ROLEX OYSTER PERPETUAL AND GMT-MASTER II ARE TRADEMARKS.

### Upcoming Station Events

- Dec. 2 Fair Park in Lights 4-8 p.m.
- Dec. 3-7 WRR & the DSO present Caroling at the Adolphus, noon-1 p.m.
- Dec. 7-9 Bachendorf's Luxury Watch Event Noon-5 p.m.
- Dec. 8 & 9 KwanzaaFest 10-7 p.m. Sat. & 11-6 p.m. Sun.
- Dec. 14 Texas Ballet ticket van hits
- Jan. 7-9 Chinese New Year Spectacular- Nokia Theater
- Jan. 13 Meadows Museum live broadcast

Classical



WRR 101.1 fm  
[wrr101.com](http://wrr101.com)

# Overture

Dallas / Fort Worth • [wrr101.com](http://wrr101.com) Broadcasting in all-digital **HD Radio**

WRR CLASSICAL 101.1 FM ■

THE OFFICIAL PUBLICATION OF WRR

■ DEC. 2007/ JAN. 2008

FRIENDS



OF WRR

P.O. Box 570495  
Dallas, TX 75357  
(214) 421-8500

PRSR FIRST-CLASS MAIL  
U.S. POSTAGE  
**PAID**  
DALLAS, TX  
PERMIT NO. 13