

Classical



WRR 101.1 fm

# Overture

Dallas / Fort Worth • wrr101.com

Broadcasting in all-digital Radio  
Digital AM & FM

WRR CLASSICAL 101.1 FM ■ A MONTHLY PUBLICATION FOR FRIENDS OF WRR ■ FEBRUARY 2006

## 'The Women of Giacometti' at the Nasher

Women of Venice I - IX. Photos courtesy of Nasher Sculpture Center



Imagine the excitement of nine women reuniting for the first time in more than four decades.

Visit the Nasher Sculpture Center's current special exhibit, *The Women of Giacometti*, and you won't have to imagine. You will be among the fortunate to view this historical Giacometti exhibition featuring 48 paintings and sculptures including the nine Women of Venice bronzes, not show together since 1958.

*The Women of Giacometti*, on display through April 9, is the first Giacometti exhibit presented in Dallas since 1979. The exhibit explores the artist's long-standing fascination with the female subject, from his mother, sister, and wife to

various models. The works range from very early naturalistic portraits to Surrealist-inspired and Cubist-influenced works from the 1920s and 1930s, to Giacometti's well-known tall and slender figures including all nine cast bronze Women of Venice (Femmes de Venise) from 1956, on view together for the first time in the United States since the landmark 1958 Giacometti exhibition at the Pierre Matisse Gallery in New York.

The work of Giacometti has long been of interest to Raymond and Patsy Nasher, and the Nasher collection now encompasses 13 sculptures, two paintings, and one drawing.

Several of these are in the exhibi-

tion plus masterpieces spanning the artist's career, such as *Spoon Woman* (1926, cast 1954), *Woman with Her Throat Cut* (1932), *Tall Figure* (1947) and *The Glade* (1950).

"It is an honor to present so many outstanding works by this great master of modern art at the Nasher Sculpture Center," said Raymond Nasher. "The show directly complements and expands upon other Giacomettis in our collection."

In conjunction with this exhibit, the Nasher is offering several lectures, workshops, film presentations, and late night events. For more information, visit [www.NasherSculptureCenter.org](http://www.NasherSculptureCenter.org) or call 214-242-5100.



comes to Dallas  
March 23

Attend a live taping of nation's most popular classical radio program! WRR is bringing "From the Top" and host Christopher O'Riley to Richardson's Eisemann Center on March 23, and you're invited. To order your tickets call 972.744.4600.

March 23, 7 p.m.  
Eisemann Center  
2351 Performance Drive  
Richardson, TX 75082

## The Miraculous Mozart



By Dr. Fred Bronstein

What is the big deal about Wolfgang Amadeus Mozart? In the age of iPods, bytes and just about everything electronic, what is the relevance of this supreme genius born 250 years ago?

Maybe it's because no composer in history (with the possible exception of Beethoven) so magnificently captured the essence of the human spirit. 250 years later, Mozart's music sounds as fresh as the day it was written. Mozart is perfection itself, but in a way that is endearingly human. Architecturally perfect, the simplicity of Mozart's music often belies the underlying depth, poignancy, drama and humor that permeate his works.

I suppose it's all the more mirac-

**Greg Davis' column/and headshot here**

Continued on page 5

**Reserved ad space #1  
3.75" w x 7" h  
Meadows Museum  
Ad due to WRR  
by Jan. 18, 2006**

**Reserved ad space #2  
3.75" w x 7" h  
Bachendorf's  
Ad due to WRR  
by Jan. 18, 2006**

## The Metropolitan Opera receives a Texas-sized gift from investor Sid Bass

Texas investor Sid Bass and his wife Mercedes have given \$25 million to The Metropolitan Opera—the largest single unrestricted gift from an individual in the company's 123-year history.

Speaking of the gift, Mrs. Bass, who has been a managing director of The Metropolitan Opera since 1993, said, "We are thrilled to support the excellence of The Metropolitan Opera, one of New York's greatest assets as well as a national and world wide treasure, with this gift. Our involvement with The Metropolitan Opera over the years has given us many memorable and pleasurable musical moments."

Joseph Volpe, General Manager of The Metropolitan Opera, said, "With this gift of historic proportions, Mercedes Bass has set a new level of generosity in support of the art form and the institution

**Greg and Volpe photo here**

**WRR general manager Greg Davis with Met Opera general manager Joseph Volpe**

she loves. I am deeply grateful to her, both personally, and on behalf of the entire Metropolitan Opera company. Her vote of confidence in our past achievements and our future artistic goals is simply the best holiday gift any of us could ask for."

WRR broadcasts The Metropolitan Opera "live" Saturdays on WRR at 12:30 p.m.

## Dallasite fondly recalls her performance on national radio program 'From the Top'

In anticipation of the March 23 live taping of 'From the Top' at Eisemann Center in Richardson, WRR spoke with Dallas native Rachel Athas about her experiences as a performer on the nationally syndicated program.

Nathas, a Dallas native and graduate of Booker T. Washington High School for the Performing and Visual Arts, now attends the College Conservatory of Music at the University of Cincinnati on scholarship as a music performance major. She started singing when she was young, then started playing piano in third grade. When Nathas was 11, she started playing clarinet.

The young performer came to audition for From the Top by happenstance: "I was playing Concertino by Weber in my very first public solo recital my ninth grade year, and after the performance, a stranger walked up to me and told me he thought I had the potential to be on 'From the Top,' and that I should audition. I hadn't heard of the show until then, but I looked into it and eventually auditioned."

This audition process would prove to be a challenging one as Nathas recalls: "It's a fairly difficult and expensive process. Difficult in a sense that I sent in a recording my junior year, and they really wanted me on the air, but wanted me to submit different material. So they told me to send another recording. It was hard finding pieces that met the time requirement that were also the type of genre for which they were looking. And of course the waiting—that was hard. It was expensive due to the accompanists and studio time. But everything was well worth the effort."

When it came time to perform, Nathas had practiced so extensively that she didn't feel nervous. "I practiced the piece

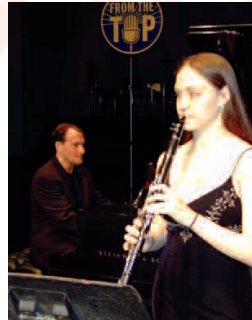
several times in front of my family, and it got frustrating practicing the same piece over and over, but the end result was worth it. The truth is that no matter how

much practice is put in, there will always be something that you wish you could have done better in the performance" says Nathas. "I wasn't nervous" Nathas continues, "I was excited to play for everyone. I was a little anxious if anything, but not at all nervous."

The performance was a transcendent experience for the clarinetist. "The show was wonderful and energetic; full of support from the others in the show."

Nathas says if one can handle self-imposed pressures, she recommends auditioning for "From the Top." [One should audition] "if they can handle pressure—not the pressure others put on them, but the pressure they put on themselves—if they're anything like me" said Nathas. "Even though the show is meant for young people, it is completely a professional environment. It was an absolutely beautiful and memorable experience."

*'From the Top' airs Saturdays at 9 a.m. on WRR*



**Rachel Nathas performs on "From the Top" with host Christopher O'Riley**

*Overture*

WRR General Manager: Greg Davis

'Overture' is the official monthly publication of WRR Classical 101.1 FM

Send comments or story ideas to Overture Editor: kwalters@wrr101.com

WRR FM  
1516 First Ave.  
Dallas, TX 75210  
214-670-8888

# WRR PROGRAM SCHEDULE

February 2006 / 101.1 FM • Dallas • Ft. Worth / Listen on the Web: wrr101.com

All program times are Central Standard Time (CST)

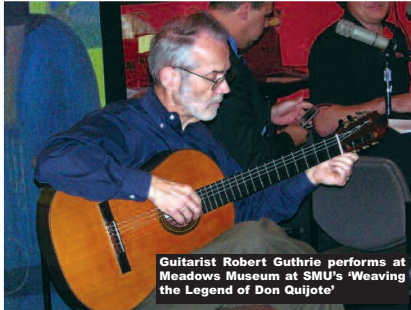
DAYPART	SUNDAY	MONDAY	TUESDAY	WEDNESDAY	THURSDAY	FRIDAY	SATURDAY		
A.M.	5:00	MUSIC ALL NIGHT with Peter Van de Graaff	THE MORNING SHOW with Christopher Hackett				MUSIC ALL NIGHT with Peter Van de Graaff		
	6:00								
	7:00								MORNING MUSICALES with Ed Blaylock
	7:30								TRINITY UNITED METHODIST
	8:00								CHRISTIAN SCIENCE
	8:30								WILSHIRE BAPTIST CHURCH
	9:00								UNIVERSITY PARK METHODIST
	9:30								LOVERS LANE UNITED METHODIST
	10:00								PASTORAL REFLECTIONS
	10:30								ST. ANDREWS EPISCOPAL
11:00	PRESTON HOLLOW PRESBYTERIAN								
P.M.	Noon	CLASSIC CAFE with Gabrielle West				THE AFTERNOON CONCERT - Sutton			
	12:30	MIDDAY MUSIC with Gabrielle West				METROPOLITAN OPERA (various times)			
	1:00							COMMAND PERFORMANCE with Ed Blaylock	
	2:00	THE GOING HOME SHOW with Kurt Rongey				THE AFTERNOON CONCERT with Chris Tucker			
	3:00							ART MATTERS with Quin Mathews & Sharon Bengé	
	4:00							THE AFTERNOON CONCERT with Chris Tucker	
	4:30	EXPLORING MUSIC with Bill McLaughlin				THE EVENING CONCERT with Chris Tucker			
	5:00							ART MATTERS with Quin Mathews & Sharon Bengé	
	5:30	THE EVENING CONCERT with Raul Enriquez				THE MAIN EVENT with Chris Tucker			
	6:00							THE EVENING CONCERT with Chris Tucker	
	6:30	ART MATTERS with Quin Mathews & Sharon Bengé				THE EVENING CONCERT with Raul Enriquez			
	7:00	DFW ORCHESTRAS	DETROIT SYMPHONY ORCHESTRA	THEME AND VARIATIONS with Raul Enriquez	NEW YORK PHILHARMONIC				
	7:30	THE EVENING CONCERT with Chris Tucker	THE EVENING CONCERT with Raul Enriquez		A NIGHT ON THE TOWN - George Harter				
	8:00	PIPEDREAMS with Michael Barone							
9:00	EVENING CONCERT with Chris Tucker	THE EVENING CONCERT with Raul Enriquez		ROMANTIC HOURS with Mona Golabek					
10:00	THE EVENING CONCERT with Chris Tucker								
11:00	MUSIC ALL NIGHT with Peter Van de Graaff								
11:30									
Midnight									
A.M.	1:00	MUSIC ALL NIGHT with Peter Van de Graaff							
	2:00								
	3:00								
	4:00								

# CLASSICAL CANDIDS

Photos from recent WRR Classical 101.1 FM events



Maestro Andrew Litton signs DSO Rachmaninov CDs at Dallas Piano Warehouse



Guitarist Robert Guthrie performs at Meadows Museum at SMU's 'Weaving the Legend of Don Quijote'



The Turtle Creek Chorale gives a show-stopping performance at 'Caroling at The Adolphus' in Dallas



Fort Worth Opera general director Darren Woods at William Campbell Contemporary Art in Fort Worth



The Dallas Wind Symphony performs at 'Picnic in the Park' at Dallas Arboretum



Kimbell Art Museum staff: Malcom Warner, Mindy Riesenberg, and Connie Hatchette at 'Gauguin and Impressionism' in Fort Worth



Piano Symphony Orchestra's Doug Kinsey and Alice Hobbs at Bachendorf's in Plano



Dallas Chamber Music Society Artistic Director Dorothea Kelley and Arend Julius Koch at Bachendorf's in Dallas



WRR announcer Gabrielle West sings a rousing rendition the "Star Spangled Banner" at 'Picnic in the Park' in Dallas



WRR General Manager Greg Davis, Jonnie England of Operation Kindness, Elliott's General Manager Charles Hanna, WRR's Chris Tucker and SPCA's James Bias at the 'Roll Over Beethoven' CD check presentation at Elliott's Hardware in Dallas



Bachendorf's owner Steve Bock with Plaza store manager Anna-Christie McAlister



The Dallas Wind Symphony tuba quartet performs at Elliott's Hardware in Dallas



Members of Texas Ballet Theater at Crest Cadillac in Plano



WRR announcer Christopher Hackett with a young fan at Bachendorf's in Plano



The Texas Girls Choir at Thistle Hill in Fort Worth

## High Notes



### Highly Cultured

Maria Munoz-Blanco is the City of Dallas' new Director of the Office of Cultural Affairs. Munoz-Blanco has over 15 years of experience in the arts field, most recently serving as Executive Director of the Cultural Arts Council of Houston.



"Luke, I am your librarian."

Legendary actor and voice of Darth Vader James Earl Jones comes to the J. Erik Jonsson Library in Dallas on March 16, 2006, at 7 p.m. as part of AuthorSpeak series. Tickets: 1-866-666-8932. Visit [dallaslibrary.org](http://dallaslibrary.org)

## Must-hear radio: February WRR highlights



By Kurt Rongey

WRR introduces an exciting new 13-week series at 6 p.m. on Saturdays beginning this month. *The Global Maestro* features recordings by the distinguished American conductor, Paul Freeman.

A recent recipient of the Mahler Award from the European Union of Arts, Paul Freeman is in constant demand as a guest conductor in many parts of the world. He has conducted more than 100 orchestras in over 30 countries. As one of America's most successful recording conductors, he has to his credit over 200 releases. He was the architect of a pioneering nine disc series tracing the history of Black symphonic composers from 1750 to the present that has garnered a great deal of attention.

*The Global Maestro* includes works taken from Maestro Freeman's discography, and his interviews of composers, performers and patrons of the arts, as

well as individuals from the corporate community.

Throughout his career, Maestro Freeman has been preaching the gospel of racial and symphonic diversity. He brings clarity to the classics and excels at presenting imaginative new works by composers of color.

February is the month of love at WRR. Is there someone for whom you'd like us to play a special piece of classical music? We invite you to let us know and tune in for *Command Performance*, starting at noon on Sundays. Send your requests to [request@wrr101.com](mailto:request@wrr101.com) with a message for your loved one. WRR announcer Ed Blaylock will be devoting the *Command Performance* show on Feb. 12 to these dedications.

Looking ahead, we'll once again be presenting the WRR March Countdown in, you guessed it, March! Every weekday morning at 7:35 a.m. from March 1-28, during our *March of the Day*, we'll count down your 20 favorite marches. To cast your vote, go to [www.wrr101.com](http://www.wrr101.com) or send a postcard with your three favorite marches to WRR March Countdown, P.O. Box 159001, Dallas, TX 75315. Ballots will be taken all through the month of February.

Listen to WRR Program Director Kurt Rongey weekdays 3-7 p.m. on WRR.



Paul Freeman

## Bronstein: DSO pays tribute to Mozart

Continued from page 1

ulous in that Mozart's genius seemed to spring forward from the time he entered the world, his style and essence perfectly formed at such an early age. While he certainly matured (we'll be featuring his last three symphonies and two of his latest and greatest piano concertos) he was from the earliest age an almost fully developed musical presence. Beethoven clearly evolves through various periods in his life, actually changing quite dramatically. By contrast, Mozart is a gorgeous and transparent musical figure almost from the start.

But the real question remains - is Mozart still relevant? More than ever! Not only does his incredible genius still dominate music history, he is a symbol of humanity at its noblest and in some sense, most vulnerable. People are peo-

ple, and so his music touches our hearts more than ever.

In honor of Mozart's birthday, the Dallas Symphony Orchestra is playing tribute to one of the top composers of all time with a festival featuring Principal Guest Conductor Claus Peter Flor and Guest Conductor Pinchas Zukerman, and performances by a great Mozart keyboard interpreter, Bob Levin. I hope you will join me for the Dallas Symphony Orchestra Mozart Festival, February 23rd - March 19th. I urge you not to miss a single moment as we celebrate this musical Giant.

Dr. Fred Bronstein is president of the Dallas Symphony Association.



Pinchas Zukerman is among several of the DSO's guest "Mozart" performers

## WRR NOTABLE PROGRAMS

**Arts Update:** 6:52 a.m. Weekdays - A brief arts event listing covering the evening's events as well as those a couple days ahead.

**Road Rage Remedy:** 7:20 a.m. and 5:20 p.m. Weekdays - WRR will calm your rush hour commute with music to soothe the nerves. Relax and enjoy the ride!

**March of the Day:** 7:35 a.m. Weekdays - Having trouble getting around in the morning? Get into step with some of the world's most upbeat music - marches! Elliott's Hardware

**Making Reservations:** 12:45 p.m. Mondays through Fridays - Fine music and fine cuisine - the perfect combination. Jim White hosts interviews, discussion, and celebrities from the world of food and wine in these insightful short features. Bob's Steak & Chop House

**The Wine Experience:** 6:20 p.m. Weekdays - This short feature presents topics relating to choosing, enjoying and understanding wine, such as matching wine with different foods, virtual walks through the vineyard, and shopping tips.

**Exploring Music:** 7:00 p.m. Weekdays - Host Bill McGlaughlin will enrich, enlighten, educate and entertain with his in-depth knowledge of and deep passion for classical music through a new musical theme each week.

**DFW Orchestras:** 8:00 p.m. Monday - Regional orchestras from the DFW Metroplex are featured including the Dallas, Fort Worth, Richardson and Plano Symphony Orchestras. Dallas Symphony Orchestra Bachendorf's Jewelers

**Detroit Symphony Orchestra:** 8:00 p.m. Tuesday - In Neeme Jarvi's final season as artistic director, join this outstanding orchestra in full-length concert broadcasts recorded live.

**Theme and Variations:** 8:00 p.m. Wednesdays - Whether it's a holiday, a composer, or a performer, tune in to WRR's new show of classical themes.

**Arts Calendar:** 5:30 p.m. Thursdays - An extended arts event listing covering the upcoming week. Dr. Stromberg

**New York Philharmonic:** 8:00 p.m. Thursdays - From Avery Fisher Hall, Lorin Maazel leads the orchestra that is perhaps the foremost cultural icon of classical music in the United States. Expect the crème de la crème of soloists and guest conductors.

**Garden Notes:** 8:30 a.m. Saturdays - Featuring Bonnie Bradshaw from the Texas Discovery Gardens, join us for an ongoing celebration of gardening. Preservation Tree Service

**From the Top:** 9:00 a.m. Saturdays - Some of the nation's most gifted young musicians take the stage for this inspiring and funny program.

**Metropolitan Opera:** Saturday afternoons - The nation's most revered opera company brings full-length opera to the WRR radio audience, featuring the world's most sought-after singers.

**The Main Event:** 8:00 p.m. Saturdays - Two hours of new classical CD releases. Hear it here first! Every Main Event show, you have a chance to win one of the CD's we play.

**A Night on the Town:** 10:00 p.m. Saturdays - From Richard Rodgers to Andrew Lloyd Webber, George Harter brings you the best of the American musical stage. Bachendorf's Jewelers

**The Romantic Hours:** 11:00 p.m. Saturdays - Mona Golabek's popular, unique and, yes, romantic mix of music and literature.

**Religious programming:** 7:30 a.m. until 12:00 p.m. Sundays - WRR airs religious services by churches of many denominations and faiths Sunday mornings. See Sunday listings for details.

**Command Performance:** noon Sundays - The only all-classical request show in the metroplex. Share your favorite music by emailing us at [request@wrr101.com](mailto:request@wrr101.com) or calling metro 972-263-wrr1.

**Art Matters:** 4:00 p.m. Sundays and 6:30 p.m. Thursdays - Quin Mathews and Sharon Bengé co-host this in-depth look at the arts in North Texas. This is the place to hear insightful interviews with some of the area's arts luminaries as well as distinguished visitors. Bachendorf's Jewelers

**Music of the Metroplex:** 7:00 p.m. 2nd Sunday of every month - Kevin Sutton interviews and surveys the work of eminent North Texas musicians and organizations. Friends of WRR

**Pipedreams:** 10:00 p.m. Sundays - The king of instruments, the pipe organ, is the focus of this 90-minute program that spans the globe in its search for great music.

## Join *Friends of WRR* today!

Why Support the Friends? Music enriches all of our lives. We at the Friends of WRR are committed to providing programming that enhances classical music education and benefits the local community, its artists, and arts groups.

Support from individuals and organizations alike enables the Friends to continue responding to artistic needs within the community.

By giving to the Friends, you add your voice to our own and help promote classical music throughout the metroplex and beyond.

Members receive many benefits, including:

- The monthly WRR Program Guide.
- Special discounts for merchandise and special events.

Support the Friends of WRR today, and help to support the education, enjoyment and understanding of classical music in the WRR listening area.

### Friends of WRR Membership Levels *(please select one)*

- Benefactor (\$1,011)    Patron (\$500)  
 Classic Friend (\$101)    Regular Member (\$50)

Full Name \_\_\_\_\_

Billing Address \_\_\_\_\_

City \_\_\_\_\_ State \_\_\_\_\_

Zip \_\_\_\_\_

Phone Number \_\_\_\_\_

Email Address \_\_\_\_\_

Select form of payment:    Check    Credit Card

Credit Card Number \_\_\_\_\_

Expiration Date \_\_\_\_\_

Signature \_\_\_\_\_

Please mail this form and check to: **Friends of WRR**  
P.O. Box 570495  
Dallas, Texas 75357



## Best Classical CDs of 2005

Selected by Scott Cantrell  
classical music critic for *The Dallas Morning News*

Scott Cantrell visited the WRR studios on New Years Eve to share his favorite CDs of 2005 with WRR listeners. In case you missed this two-hour special, here are his selections:

- Mozart: *Violin Sonata in F, K. 377* (Steinberg, Uchida) Philips SACD 475 6200  
Beethoven: *String Quartet in F, Op. 18/1* (Miro Quartet) Vanguard Classics ATM CD 1655  
Brahms: *Piano Concerto No. 2* (Gelber, Kempe, RPO) EMI Classics 7243 5 86869 2  
Mahler: *Symphony 7* (Tilson Thomas, SFSO) SFS 821935-0009-2  
Vierne: *Organ Symphony 6: Final* (Filsell) Signum Classics SIGCD063  
Stravinsky: *"Fairy's Kiss" Divertimento* Koch International Classics KIC-CD-7594  
Copland: *Piano Variations* (Pasternack) Naxos 8.559184  
Tippett: *Piano Sonata 1* (Donohoe) Naxos 8.557611  
Fauré: *La bonne chanson* (Maltman, Johnson) Hyperion CDA67335



Mahler: *Symphony 7*  
SFS821935-0009-2



Tippett: *Piano Sonata 1*  
Naxos 8.557611



Copland: *Piano Variations*  
Naxos 8.559184

## Upcoming WRR Events

- March 23   From the Top - Experience a live taping of the nation's most popular classical radio program. 7 p.m. at Eisemann Center Eisemann Center: 2351 Performance Drive Richardson, TX 75082.
- March 25   Join WRR at the Denson Wine & Art Festival. Details TBA.
- March 26   Plano Book Festival - Join WRR at the 5th Annual Plano Book Festival for Adult Literacy from 11 am - 6 pm in downtown Plano, Texas.

Classical



WRR 101.1 fm

*Overture*  
Dallas / Fort Worth • wrr101.com   Broadcasting in all-digital **Radio**  
Digital AM & FM

WRR CLASSICAL 101.1 FM

■ A MONTHLY PUBLICATION FOR FRIENDS OF WRR

■ FEBRUARY 2006

FRIENDS



OF WRR

P.O. Box 570495  
Dallas, TX 75357  
(214) 421-8500

PRSR FIRST-CLASS MAIL  
U.S. POSTAGE  
**PAID**  
DALLAS, TX  
PERMIT NO. 13